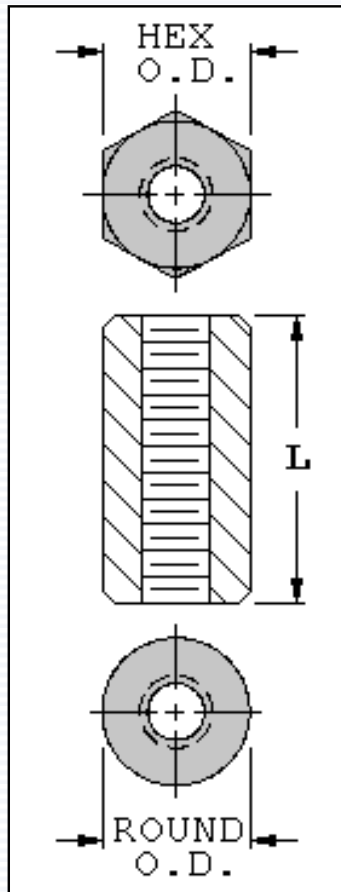


## Hex & Round Standoffs

4-40 Threads - .187 [4,75] O.D. - Brass • Aluminum • Stainless Steel



### 4-40 Threaded Standoffs - .187 [4,75] O.D.

Length "L" Inch [mm]	O.D. Inch [mm]	Aluminum Clear Iridite		Brass Zinc Plate		Stainless Steel
		Cat. No.		Cat. No.		Cat. No.
		Hex	Round	Hex	Round	Hex
.250 [6,35]	.187 [4,75]	<b>1891</b>	<b>2025</b>	<b>1450</b>	<b>1547</b>	<a href="#">Click Here</a>
.375 [9,53]	.187 [4,75]	<b>1892</b>	<b>2026</b>	<b>1803</b>	<b>1864</b>	<a href="#">Click Here</a>
.500 [12,70]	.187 [4,75]	<b>1893</b>	<b>2027</b>	<b>1656</b>	<b>1657</b>	<a href="#">Click Here</a>
.625 [15,87]	.187 [4,75]	<b>1894</b>	<b>2028</b>	<b>1804</b>	<b>1865</b>	<a href="#">Click Here</a>
.750 [19,05]	.187 [4,75]	<b>1895</b>	<b>2029</b>	<b>1656A</b>	<b>1657A</b>	<a href="#">Click Here</a>
.875 [22,23]	.187 [4,75]	<b>1896</b>	<b>2030</b>	<b>1805</b>	<b>1866</b>	<a href="#">Click Here</a>
1.000 [25,40]	.187 [4,75]	<b>1897</b>	<b>2031</b>	<b>1656B</b>	<b>1657B</b>	<a href="#">Click Here</a>

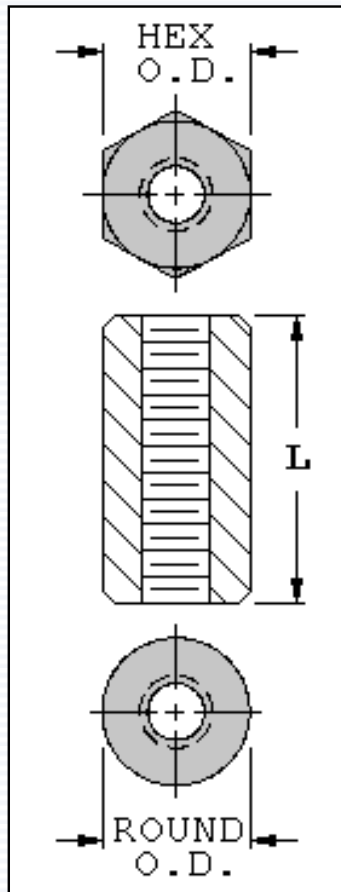
Stainless Steel Standoffs, .500 [12,70] and longer, are tapped .250 [6,35] each end.

Standoffs sizes not shown are available on special order.

[Click to Request Samples](#)

[VIEW PRODUCT OVERVIEW](#)

## 4-40 Threads - .250 [6,35] O.D. - Brass • Aluminum • Stainless Steel



4-40 Threaded Standoffs - .250 [6,35] O.D.						
Length "L" Inch [mm]	O.D. Inch [mm]	Aluminum Clear Iridite		Brass Zinc Plate		Stainless Steel
		Cat. No.		Cat. No.		Cat. No.
		Hex	Round	Hex	Round	Hex
.250 [6,35]	.250 [6,35]	<b>2201</b>	<b>3478</b>	<b>1450A</b>	<b>1547A</b>	<b>1921</b>
.375 [9,53]	.250 [6,35]	<b>2202</b>	<b>3479</b>	<b>1450B</b>	<b>1547B</b>	<b>1921A</b>
.500 [12,70]	.250 [6,35]	<b>2203</b>	<b>3480</b>	<b>1450C</b>	<b>1547C</b>	<b>1921B</b>
.625 [15,87]	.250 [6,35]	<b>1808</b>	<b>1839</b>	<b>1829</b>	<b>1867</b>	<b>Special Order</b>
.750 [19,05]	.250 [6,35]	<b>2204</b>	<b>3481</b>	<b>1450D</b>	<b>1547D</b>	<b>1921C</b>
.875 [22,23]	.250 [6,35]	<b>1809</b>	<b>1846</b>	<b>1830</b>	<b>1876</b>	<b>Special Order</b>
1.000 [25,40]	.250 [6,35]	<b>2205</b>	<b>3482</b>	<b>1450E</b>	<b>1547E</b>	<b>1921D</b>
1.500 [38,10]	.250 [6,35]	<b>2206</b>	<b>3483</b>	<b>1831</b>	<b>1877</b>	<b>1921E</b>
2.000 [50,80]	.250 [6,35]	<b>2207</b>	<b>3484</b>	<b>1832</b>	<b>1878</b>	<b>1921F</b>

Standoffs over 1.000 [25,40] long are tapped .375 [9.63] each end.

Stainless Steel Standoffs, .500 [12,70] and longer, are tapped .250 [6,35] each end.

Standoff sizes not shown are available on special order.

[Click to Request Samples](#)

[VIEW PRODUCT OVERVIEW](#)